

PATIENT INFORMATION SHEET FOR USE OF:

Normlgel®



Hypergel®



Normlgel or Hypergel is a dressing that has been ordered by your healthcare provider. It will help your wound to heal

- The gel will need to be secured with a secondary dressing
- If the cover dressing is waterproof, you may be able to bathe or shower with the dressing in place. Ask your healthcare provider

Disposable gloves should be worn to protect yourself and others

STEP 1. Preparing to care for your wound:

- Clean your work area before changing your dressing
- Gather your supplies as listed under **PATIENT DIRECTIONS**
- Wash and dry your hands

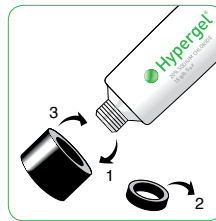
STEP 2. Removing your soiled dressing:

- Remove the cover dressing that is holding your gel in place
- Gently rinse all remaining gel from the wound
- Discard in a plastic bag and remove your gloves
- Wash and dry your hands

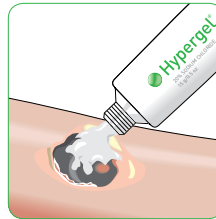
STEP 3. Cleaning your wound:

- Clean your wound using wound cleanser as listed under **PATIENT DIRECTIONS**
- Dry the skin around your wound with dry gauze or a clean cloth

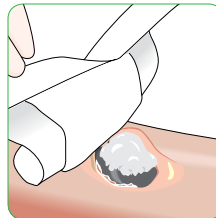
STEP 4. Applying your new Normlgel or Hypergel dressing:



A Remove the cap from Normlgel or Hypergel. Remove red or black ring. Place the cap back onto the tube and firmly twist to open the tube



B Apply a thin layer of gel on the wound. Use a cotton swab if needed
OR
If instructed apply gel onto clean, dry gauze and place into the wound.



C Cover with a cover dressing as listed under **PATIENT DIRECTIONS**

PATIENT DIRECTIONS

SUPPLIES YOU MAY NEED:

Normlgel / Hypergel

Size: _____
Order number: _____

- Dry gauze/clean cloth
- Disposable gloves
- Plastic bag

Wound cleanser: _____
Cover dressing: _____
Other: _____

YOUR DRESSING SHOULD BE CHANGED:

Day/Frequency: _____

NOTE: The dressing should be changed daily or as instructed.

RECORD DATE OF DRESSING CHANGE

Week 1	Week 2	Week 3	Week 4

CONTACT NUMBER:

WHERE TO GET YOUR DRESSINGS

Supplier name and phone number _____

WHEN TO CALL THE HEALTHCARE PROVIDER (doctor, nurse, therapist)



- Any change in the wound that is a concern to you
- If the drainage from the wound increases
- If you have a sudden increase in pain, or new pain in your wound

- If the area around the wound gets red, swollen or painful to touch
- If the wound color changes from pink or red to a tan, brown or black color
- If you get a fever, or if the wound odor gets worse
- If you have questions

NOTE: The recommendation and information in this material should not be considered a substitute for medical advice or diagnosis. See package insert for full instructions and precautions. Please contact your healthcare provider with any questions regarding the care or condition of your wound.

