

PATIENT INFORMATION SHEET FOR USE OF:

Alldress®



Mepore® Pro



Alldress or **Mepore Pro** is a dressing that has been ordered by your healthcare provider. It will help your wound to heal

- You may gently shower or bathe with this dressing in place

Disposable gloves should be worn to protect yourself and others

STEP 1. Preparing to care for your wound:

- Clean your work area before changing your dressing
- Gather your supplies as listed under **PATIENT DIRECTIONS**
- Wash and dry your hands

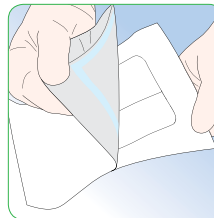
STEP 2. Removing your soiled dressing:

- Remove the **Alldress** or **Mepore Pro** dressing by gently lifting a corner and peeling away from your wound
- If present, remove wound filler as instructed
- Discard in a plastic bag and remove your gloves
- Wash and dry your hands

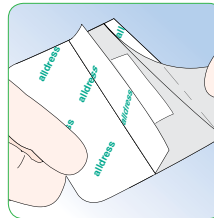
STEP 3. Cleaning your wound:

- Clean your wound using wound cleanser as listed under **PATIENT DIRECTIONS**
- Dry the skin around your wound with dry gauze or a clean cloth
- If needed, replace wound filler as instructed

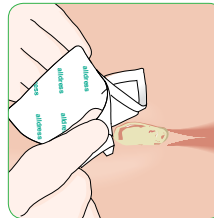
STEP 4. Applying your new **Alldress** or **Mepore Pro** dressing:



A Open the package



B Remove the release film



C Gently press the dressing onto your skin being sure all edges are flat. This will help it to be waterproof

WHEN TO CALL THE HEALTHCARE PROVIDER (doctor, nurse, therapist)



- Any change in the wound that is a concern to you
- If the drainage from the wound increases
- If you have a sudden increase in pain, or new pain in your wound

- If the area around the wound gets red, swollen or painful to touch
- If the wound color changes from pink or red to a tan, brown or black color
- If you get a fever, or if the wound odor gets worse
- If you have questions

NOTE: The recommendation and information in this material should not be considered a substitute for medical advice or diagnosis. See package insert for full instructions and precautions. Please contact your healthcare provider with any questions regarding the care or condition of your wound.

The Mölnlycke Health Care, Alldress, and Mepore names and respective logos are registered trademarks of Mölnlycke Health Care AB. Distributed by Mölnlycke Health Care US, LLC, Norcross, Georgia 30092. © 2009. Mölnlycke Health Care AB. 1.800.882.4582.

PATIENT DIRECTIONS

SUPPLIES YOU MAY NEED:

Alldress / Mepore Pro

Size: _____
Order number: _____

- Dry gauze/clean cloth
- Disposable gloves
- Plastic bag

Wound cleanser: _____
Wound filler: _____
Other: _____

YOUR DRESSING SHOULD BE CHANGED:

Day/Frequency: _____

NOTE: The dressing should be changed when you see the wound fluid is present at the edges of the white pad.

RECORD DATE OF DRESSING CHANGE

Week 1	Week 2	Week 3	Week 4

CONTACT NUMBER:

WHERE TO GET YOUR DRESSINGS

Supplier name and phone number

